

PERIMETER

SURVEYING & MAPPING
 Prepared by: Jeff S. Hodapp, P.S.M.
 Certificate of Authorization No. LB7264
 951 Broken Sound Parkway, Suite 320
 Boca Raton, Florida 33487
 Tel: (561) 241-9988
 Fax: (561) 241-5182
 25' DRAINAGE, BERM AND
 LANDSCAPE BUFFER EASEMENT
 (P.B. 100, PGS. 180-186)

A PORTION OF THE ORANGE POINT P.U.D.

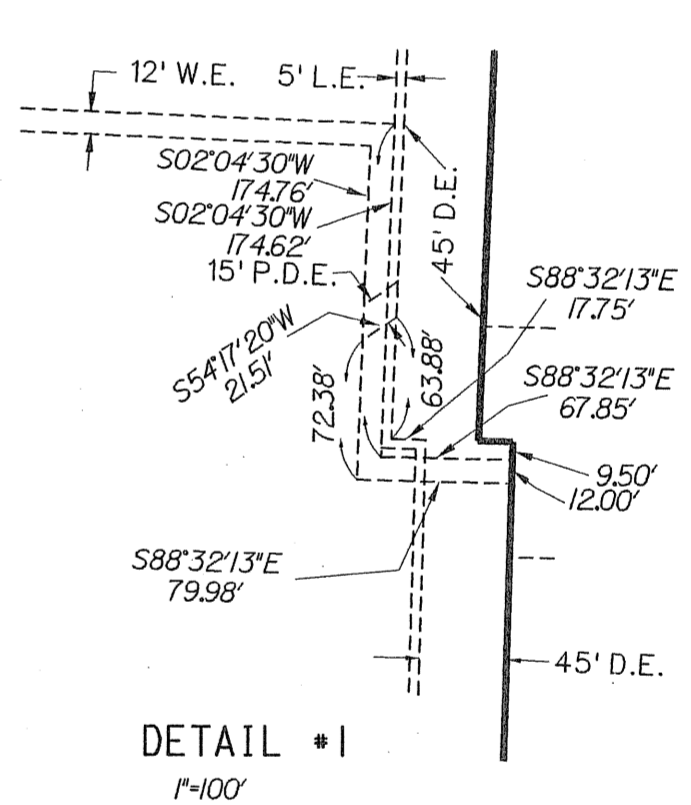
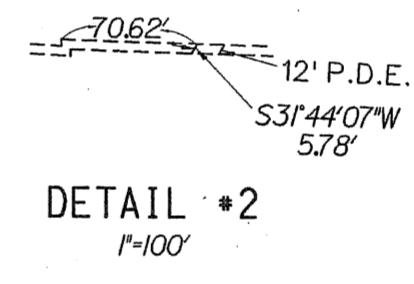
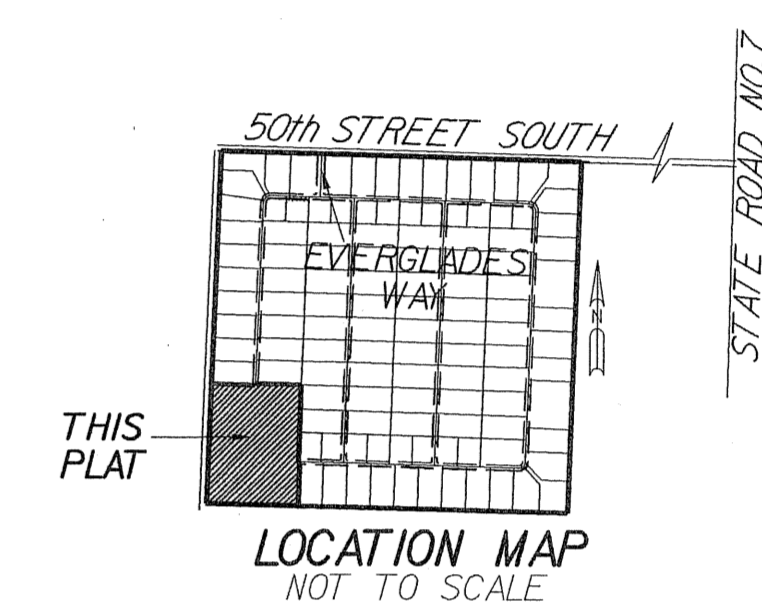
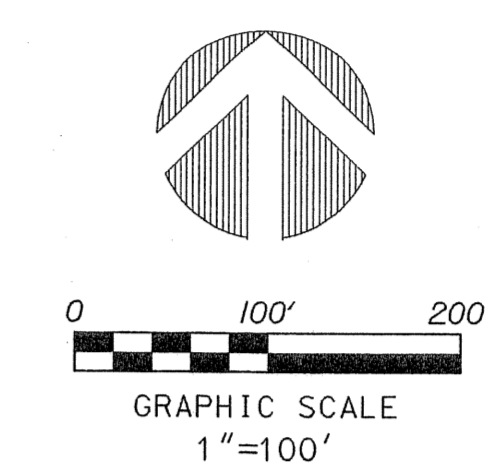
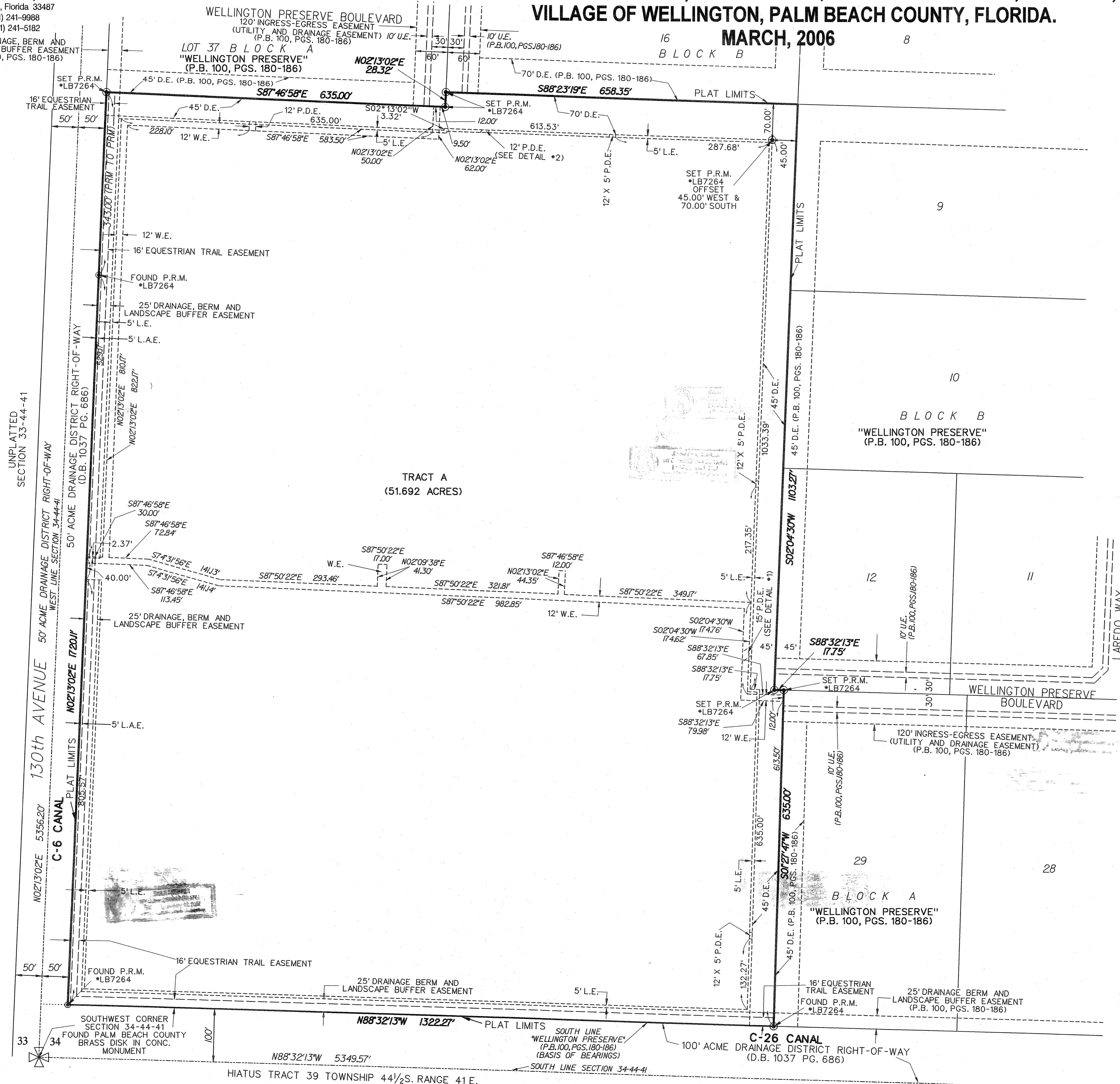
IROQUOIS FARM

**A REPLAT OF LOTS 30-36, BLOCK A & LOTS 13-15, BLOCK B, "WELLINGTON PRESERVE"
 (P.B. 100, PGS. 180-186, P.B.C.R.) IN SECTION 34, TOWNSHIP 44 SOUTH, RANGE 41, EAST,
 VILLAGE OF WELLINGTON, PALM BEACH COUNTY, FLORIDA.**

MARCH, 2006

200

SHEET 2 OF 2



- LEGEND:**
- SET P.R.M. (UNLESS OTHERWISE NOTED) - ALUMINUM DISK IN 4"x4" CONC. MON. STAMPED LB7264
- ABBREVIATIONS:**
- CONC. - CONCRETE
 - DEED BOOK - DEED BOOK
 - D.B. - DEED BOOK
 - D.E. - DRAINAGE EASEMENT
 - L.B. - LICENSED BUSINESS
 - L.A.E. - LIMITED ACCESS EASEMENT
 - L.E. - LANDSCAPE EASEMENT
 - L.S. - LICENSED SURVEYOR
 - MON. - MONUMENT
 - O.R.B. - OFFICIAL RECORDS BOOK
 - P.B. - PLAT BOOK
 - P.B.C.R. - PALM BEACH COUNTY RECORDS
 - P.D.E. - PRIVATE DRAINAGE EASEMENT
 - PG. - PAGE
 - P.R.M. - PERMANENT REFERENCE MONUMENT
 - P.S.M. - PROFESSIONAL SURVEYOR & MAPPER
 - P.U.D. - PLANNED UNIT DEVELOPMENT
 - U.E. - UTILITY EASEMENT
 - W.E. - WATER EASEMENT